



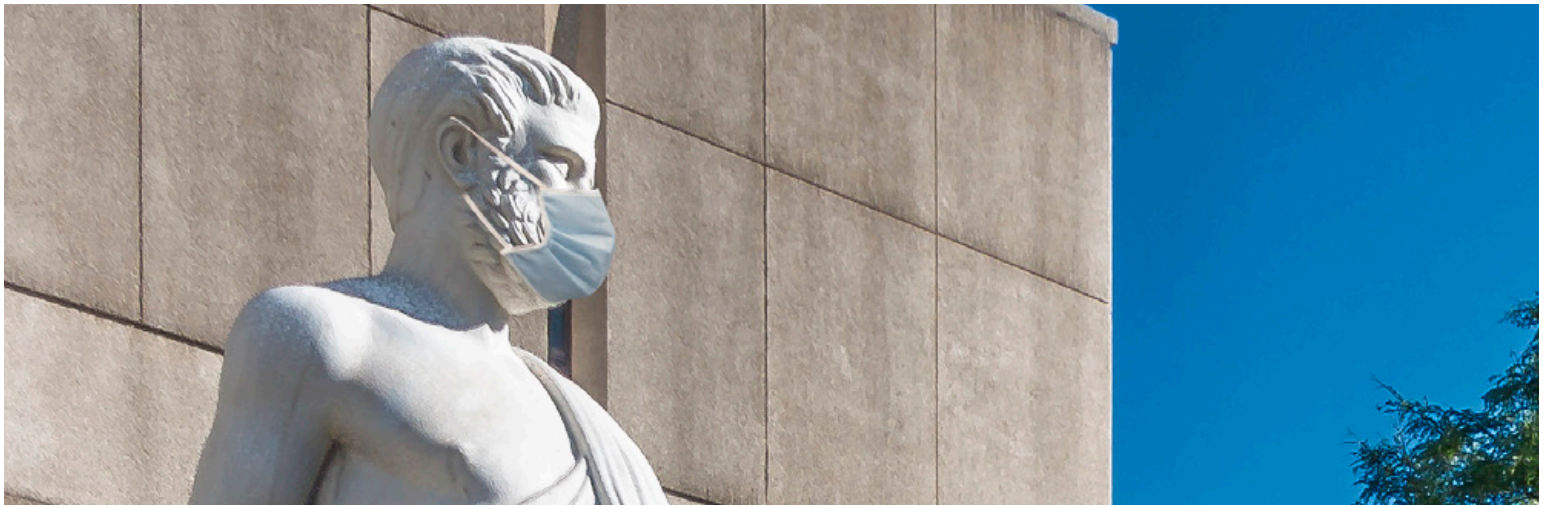
WAYNE STATE
School of Medicine

ACADEMIC DIGEST

August 2020 Newsletter

WEARING IS CARING

It's something everyone can and should do to stay safe and prevent the spread of COVID-19



Critical Role

We all play a role in keeping our campus safe, and your role is especially critical to our success. Whether on campus or at any clinical site, all students must wear a mask and follow the School of Medicine's coronavirus response guidelines while on campus or at a clinical site.

It is imperative to the health and safety of all students, faculty and staff that everyone continue to do their part as medical professionals and physicians in training during the COVID-19 pandemic. This includes speaking up if you see a fellow student, a faculty member or a staff member who is without a mask and/or is failing to adhere to the guidelines.

Additionally, please remember that your commitment to health and safety precautions does not end at the boundaries of campus. In your off-campus activities, please continue to practice safe, responsible behavior and avoid situations that are likely to promote spread of the virus.

Stay safe and stay Warrior Strong.

Table of Contents

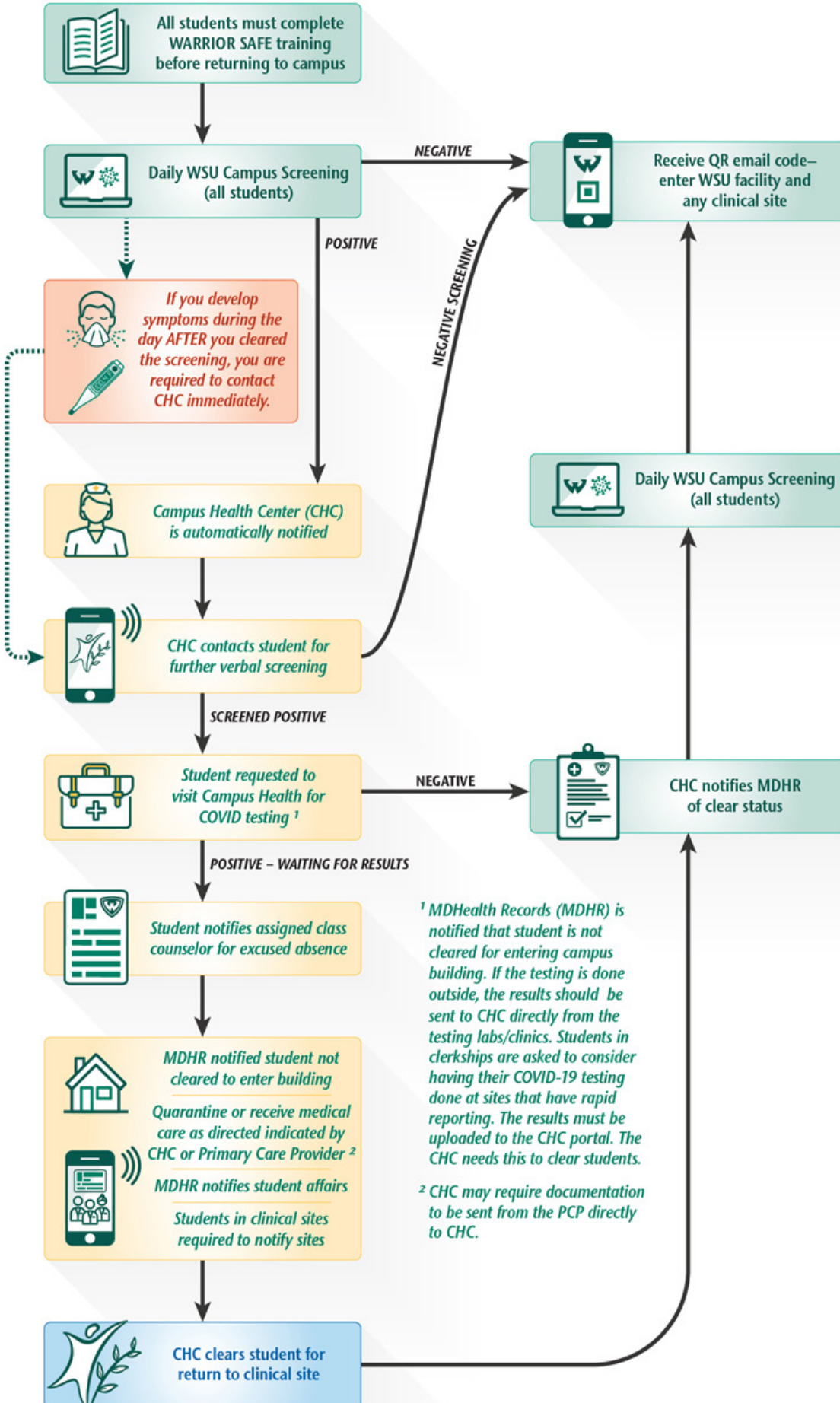
Return to Campus 2020	2
Pandemic Preparedness.....	3
Learning Communities	4
Student Affairs	5
Faculty Affairs.....	6
Shiffman Library	7
Scott Hall.....	8




ALL CAMPUSES

Wayne State University School of Medicine Clinical Site Guide for Students

START HERE




Students assigned to clinical sites may need to complete additional site specific screeners



Students must wear face coverings inside all SOM facilities and adhere to posted signage



Contact your counselor or student affairs if you are immunocompromised


All Medical Students will receive:
One SOM cloth mask
Five surgical masks for various in person activities


Students who are assigned to CEC will receive:
Ten Surgical Masks
Two N-95 Masks

For questions or concerns regarding distribution, contact:
Scott Nelsen
313-577-1431
snelsen@med.wayne.edu


WSU SOM Coronavirus information and submit questions/comments visit
med.wayne.edu/coronavirus


Steps to upload documents to the CHC Patient Portal

Visit health.wayne.edu and click the link at the bottom left of the page entitled, Patient Portal, under the Useful Links section. You will need to create a username and password the first time



PANDEMIC PREPAREDNESS

WAYNE STATE UNIVERSITY SCHOOL OF MEDICINE PERSONAL PROTECTIVE EQUIPMENT DISTRIBUTION



All Medical Students will receive:



One SOM cloth mask



5 Surgical masks for various in person activities



Students who are assigned to CEC will receive:



10 Surgical Masks



2 N-95 Masks

Unfortunately, we will not be able to offer fit testing on campus



When picking up your PPE kits



Practice social distancing and maintain 6 feet between your fellow classmates

Please wear your mask at all times.



Additional Information



In addition, we can make N-95 masks and Face Shields available to students in a limited fashion for those who need additional layers of protection. We want to reserve PPE supplies for students who are immunocompromised and/or living with family members or in households with someone who may be immunocompromised. If you need additional PPE, we request that you contact Scott Nelsen and the Learning Spaces and Support team (LSS)



Distribution Dates and Times:

Mondays or Fridays
10 a.m. – 3 p.m.
Learning Spaces and Support Office, 2330 Scott Hall

Questions or concerns regarding distribution:

Scott Nelsen
☎ 313-577-1431
✉ snelson@med.wayne.edu

WAYNE STATE WARRIOR WELCOME BACK BAG DISTRIBUTION OPEN TO ALL STUDENTS



Summary of Welcome back event:

Each bag will contain:

- Three WSU-logoed washable face masks
- 2oz bottle of hand sanitizer (70% alcohol)
- Portable tissue packet
- Phone stand cleaner combo keychain
- Antibacterial pen
- Webcam privacy cover (sponsored by the WSU Student Senate)
- Lanyard
- OneCard holder



Important pick up details

Please arrive in a vehicle!

- We prefer no walk-ups or any hand-to-hand pick-ups to adhere to social distancing guidelines.
- Keep windows up and maintain at least six feet away from the tent while still inside the vehicle.
- Write AccessID large on paper and have displayed in the driver door window – A volunteer will check-in student via app to confirm pick-up.
- Volunteer will instruct driver to lower back seat window for bag transfer.
- DO NOT EXIT THE VEHICLE AT ANY TIME.
- Please note, bags are for Fall 2020 registered students only - not employees. Only one bag per student regardless of pick-up method/location.
- Sorry, bags cannot be mailed.



LEARNING COMMUNITIES

Wayne Warrior M.D. Student Learning Community Updates

Engagement

The Learning Community peer mentors have been checking in with their Class of 2024 mentees weekly via email, text, chat and Zoom. The groups that held Zoom sessions invited the clinical mentors to join in, and the M1s appreciated their participation. The mentors and mentees have been getting acquainted by sharing experiences and guidance for the adjustment to beginning medical school, moving to Detroit and getting acclimated during the COVID-19 pandemic.

The Learning Communities have also been having fun. The Blue, Green, Purple and Yellow Learning Communities coordinators have planned or conducted Trivia, Game Night, and Netflix and Snack (via Zoom). According to the Learning Communities Institute, the role of Learning Communities during COVID-19 best practices are: to keep connections with our students. Concerns around education, safety and personal impacts of the pandemic can be reduced with interconnections. The Wayne Warrior M.D. Student Learning Community Champions have that under control with its small-group virtual check-ins.



WHAT'S NEXT (Virtual)

Sept. 15

Peer Mentor Task Force (Sara Saymuah, LaToya Sherman, Victoria Badia and Eric Ayers, M.D.) will meet with the peer mentors via Zoom for professional development and a chance to discuss student feedback and progress of the program.

TBD

*Second round of "Virtual Conversations"

Monday, Oct. 5, 5–6 p.m.

Racism in Medicine Summit (more information coming soon)

For more information, email SOM-LC@WAYNE.EDU, or stop by the Learning Community Office, 320 E. Canfield, Detroit, MI 48201, Mazurek Medical Education Commons, Suite 204.

Scholarship

The annual Learning Communities Institute conference will be conducted virtually Oct. 24. Congratulations to LaToya Sherman in the Office of Learning and Teaching, Eric Ayers, M.D., and M2 Executive Learning Community coordinator Sara Saymuah (Blue) for being accepted as poster presenters. M4 coordinators Emilyn Anderi (Brown), Akhil Vedere (Gray), Sruthi Sathyakumar (Yellow), Brittany Kashat (Green) and Executive Coordinator Mohammad Sattar (Orange) will also present posters at the national conference. Thank you to Margit Chadwell, M.D., and the Office of Student Affairs for sponsoring the students' attendance.

And congratulations for the Learning Communities' first published article. Click the link to read: [Learning Communities Engage Medical Students: A COVID-19 Virtual Conversation Series](#)



Eric Ayers, M.D., F.A.C.P., F.A.A.P.



STUDENT AFFAIRS

Health and Wellness

Please join us for the following remote wellness sessions this month:

Med School-wide Initiatives Update

Our health and wellness team would like to thank all of you who contributed thus far to our two medical schoolwide initiatives. Unfortunately, we do not have enough submissions to complete the "Thank You Detroit HealthCare Workers Video" and "Living Room Got Talent." Be on the lookout for future initiatives – we have some fun ideas ahead.

Two new resources:

If you haven't signed up yet, be sure to check out **Early Alert** and **My MD-to-Be** – available now to all medical students at WSUSOM. Enrolling takes two minutes – start here:

Early Alert

Early Alert is a confidential one-question text about wellness that immediately sends resources and ideas for wellness if you request them.

To enroll: EarlyAlert.me/start/wsusom

My MD-to-Be

My MD-to-Be emails you and any family members & friends whom you choose info on what it's like to be a medical student at WSUSOM & how they could support you – and is linked to your schedule at WSUSOM so the emails are relevant.

To enroll: MyMDtoBe.com/start/wsusom

Or scan below:

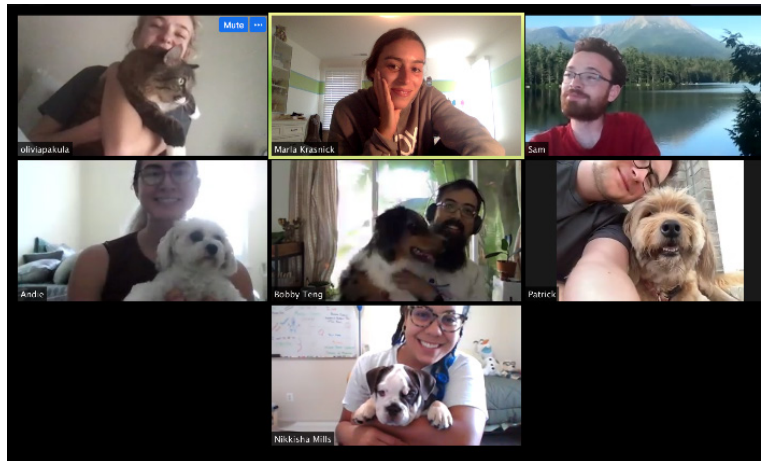


Mindfulness Meditation with Ms. Connors – Thursdays, 4-4:45 p.m.

tinyurl.com/yccvsysg | Meeting ID: 847 483 2623
Password: 7GYr9R

Career Corner with Ms. Connors – Wednesdays, Noon-1 p.m.

tinyurl.com/ycdz85y7 | Meeting ID: 864 7221 7658





FACULTY AFFAIRS

The Office of Faculty Affairs and Professional Development has embarked on a number of initiatives to support the mission of the School of Medicine. Several new programs have been implemented to enhance the myriad of existing faculty programs in the areas of education, scholarship, and service.

Focus on Faculty Development

A new position of associate dean for Professional Development has been created. Beena Sood, M.D., professor of Pediatrics, was appointed to the post after a national search. Dr. Sood works closely with Basim Dubaybo, M.D., vice dean for Faculty Affairs and Professional Development, to create a number of faculty development programs. This work is coordinated by a committee that, in addition to Drs. Dubaybo and Sood, includes Rafael Fridman, Ph.D., professor of Pathology, and Heidi Kromrei, Ph.D., assistant dean of Learning and Teaching in the Office of Medical Education. The committee's first task will be to develop an intensive course on mentorship for the achievement of tenure by faculty members in the early years of their academic careers.



Focus on Diversity and Inclusion

In collaboration with the Office of Diversity and Inclusion, the Office of Faculty Affairs co-sponsored a task force aimed at increasing the recruitment and retention of faculty members from communities that are under-represented in medicine. The final report of the task force has been completed and includes specific recommendations in the areas of general climate, hiring, retention, monitoring and accountability.

Focus on Women in Medicine

For several years, the Women in Medicine and Science group has worked under the auspices of the Office of Faculty Affairs to address specific needs of women faculty members. Among the programs implemented by this group is a comprehensive lecture series that offers continuing medical education credits. This month, after extensive research, the group opened the first Maternal Support Room in the School of Medicine to assist new mothers among faculty members, staff and trainees who are breastfeeding newborns.



Focus on Community Outreach

The Wayne State University School of Medicine is dedicated to providing services in the community. During the past several months, the Office of Faculty Affairs has been reaching out to physicians at affiliated sites and in the community to develop collaborative educational programs. Several new voluntary faculty members have joined the ranks of the teaching staff. In addition, the office has developed a new infrastructure to facilitate communication with community physicians and hospitals.

The Office of Faculty Affairs will continue to implement faculty development and recognition programs, and maintain the outstanding academic environment that students cherish.



COVID-19: Updates from the Library System

What if I have an overdue item?
Keep the book for now. We are waiving fines until further notice.

How can I access the library?
Our electronic resources and online services remain fully operational.

SHIFFMAN LIBRARY

Shiffman Medical Library Reopening Date Rescheduled

Vera P. Shiffman Library's reopening date has been rescheduled.

The Shiffman Library will reopen its doors for limited quiet study space and restricted access to select print material. The library has implemented changes to adhere to social distancing, capacity and cleaning guidelines. The library will operate with limited staff. Users who wish to utilize quiet study space will need to RSVP using a new reservation system. A link to the system will be prominently posted on the library's website days before reopening. The library continues to offer reference, research and teaching support services online at guides.lib.wayne.edu/shiffman/support.

Shiffman Library Featured Resource

Histology Resources in AccessMedicine

The Shiffman Library provides access to premier educational tools to support your academic career. This month it features histology textbooks and study aids in AccessMedicine. AccessMedicine and other aggregate websites are accessible from Shiffman's SoM Years I and II Research Guide.

Access Provided by: wayne state university

The screenshot shows the AccessMedicine search interface. At the top, there is a navigation menu with options like Books, Quick Reference, Drugs, Multimedia, Cases, Study Tools, Patient Ed, and Hospital Corner. A search bar contains the text 'AccessMedicine Search AccessMedicine'. Below the search bar, it displays '1-20 of 8381 Search Results for histology'. The search results are filtered by format, showing three items:

- TEXTBOOKS**: *Histology & Cell Biology: Examination & Board Review, 5e* by Douglas F. Paulsen.
- TEXTBOOKS**: *Junqueira's Basic Histology: Text and Atlas, 15e* by Anthony L. Mescher.
- BOOK CHAPTER**: *Histology & Its Methods of Study* from the book *Junqueira's Basic Histology: Text and Atlas, 15e*.

On the left side of the search results, there is a 'Filter Results' section with a 'FORMAT' filter. The filter options and their counts are:

- Book Chapter: 8875
- Images: 1231
- Tables: 403
- Quick Reference Resources: 119
- Case: 45
- Textbooks: 6



SCOTT HALL

School of Medicine dedicates new Maternal Support Room on Second Floor

The Wayne State University School of Medicine opened a Maternal Support Room within Scott Hall, coinciding with National Breastfeeding Awareness Month.

Room 2103, the first of its type on the medical campus, was celebrated with an Aug. 10 ribbon-cutting ceremony that included Dean Mark E. Schweitzer, M.D., and those who worked to secure the facility. Participation in the event was limited because of the ongoing pandemic.

Many working and student mothers who would like to breast feed their infants for the known health benefits have found expressing milk at work or school is either inconvenient or impossible given the need for privacy, refrigeration of milk and the need for running water.

School of Medicine students researched the topic through a study titled **“Barriers to Women’s Advancement: Breastfeeding Support at the Workplace.”** Based on insights derived from the study, including data from working and student mothers and an investigation of lactation spaces available at WSU, the study was released in conjunction with the opening of the new room. Understanding the difficulty mothers face as they endeavor to nurse for their infant’s health while working or completing their education, students and faculty associated with the study acted on their findings and presented the need for additional lactation and nursing spaces available to mothers.

“The Wayne State University School of Medicine takes great pride in its 152-year mission of community care and working to resolve health disparities. Our faculty and students are greatly invested in resolving real-life issues,” Dean Schweitzer said. “Today’s ribbon-cutting is evidence of this approach as this room will benefit the health of mothers and their children for decades to come. We recognize the importance of supporting nursing mothers by providing space to breastfeed, which has been shown to offer numerous health benefits for infants. As nursing mothers return to campus as faculty, physicians, physicians-in-training and staff, this room and all the WSU campus locations like it are concrete examples of our belief in creating health equity and extending support for diversity.”

Dr. Sood has chaired the Women in Medicine and Science group at the School of Medicine since 2015. She has collaborated with other groups on campus to explore gender equity initiatives. **She helped lead an analysis of the gender pay gap at WSU and showed that lack of professional advancement opportunities for women was the most powerful determinant in pay disparities.** The results were presented at national conferences and to the university’s president and provost. Under her leadership, the WIMS Advisory Group has organized lectureships, workshops, panel discussions and book clubs to engage faculty in diverse topics, including gender pay gap, negotiation skills, climbing the academic ladder, work-life balance, getting to the C Suite and under-representation of women in surgical specialties.

Click here to read the full article.

